

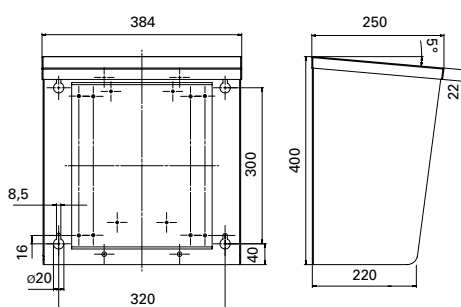
# STAINLESS STEEL WEATHER SHIELDS

For wall-mounting or freestanding installations



## Weatherproofing

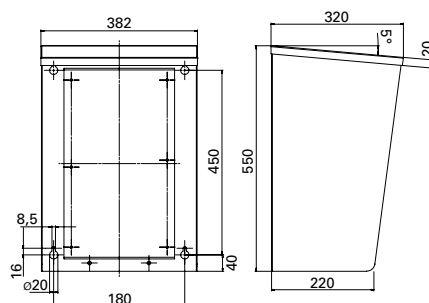
In conjunction with our weather shields, our socket combinations are also perfectly suited for outdoor installation.



## WEATHER SHIELD

Stainless steel  
dimensions W x H x D  
384 x 400 x 250 / 220 mm  
Pre-punched holes  
for wall-mounting  
Distributor Boxes (plastic)  
Series 45, 59 and 60

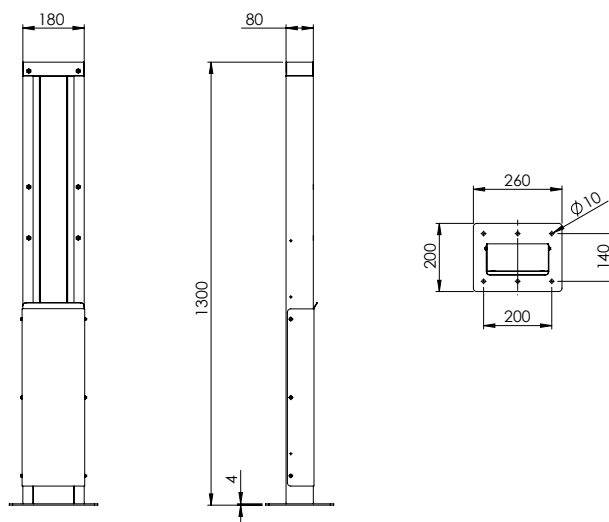
**ITEM NO. WSD60**



## WEATHER SHIELD

Stainless steel  
dimensions W x H x D  
382 x 550 x 320 / 220 mm  
Pre-punched holes  
for wall-mounting  
Distributor Boxes (plastic)  
Series 54

**ITEM NO. WSD54**



## FREESTANDING POWER DISTRIBUTOR

Stainless steel  
height 1300 mm for weather  
shields WSD60 and  
WSD54, detachable,  
height adjustable  
cover plate, solid stainless  
steel base plate  
260 x 200 mm with pre-drilled  
holes (ø 10 mm) for fast  
installation, additional bracing  
at the back for high stability

**ITEM NO. STS5460**